



## Case Study

### Organization

City of Tulsa GIS Department

### Location

Oklahoma, United States

### Industry

Local Government

# Tulsa Forges a Path into the Future

Tulsa, Oklahoma, is a city with a rich and proud history. Resources like oil and US Route 66 have helped build this community from the ground up. Now the city has turned to Esri's Community Maps Program to help it define the community from the top down. By becoming a Community Maps contributor, Tulsa has gained access to its own data in a new way. Eliminating the need for hosting and maintaining a basemap service, it can now focus on developing the operational layers that provide other city departments and the public with what they need. Application development manager John Gregorovic, a pioneer and thought leader in the City of Tulsa's GIS department, has been instrumental in providing a vision for how to accomplish this.

## Immediate Benefits of Joining Community Maps Program

The first step for Gregorovic was to sign up for a training session: "I actually learned a lot about cartography and great ETL [extract, transform, and load] processes. The technical workshop was helpful in explaining what I needed to do to get my data integrated into the Local Government [Information] Model."

While the process behind preparing Tulsa's data seemed like an intimidating task at first, Gregorovic was surprised to find Esri willing to meet him halfway. "Initially, I only had 10 to 12 feature classes to submit to the Local Government model, but Esri was willing to accept it and give feedback on what I needed to do in order to meet the standard for the integration process," he said. Contributors like Gregorovic take pride in providing a dataset representing an entire municipality, and with it comes a sense of accountability. "If I am sharing data with users, I am going to make sure the data is more correct. I want it to be the best it can be."

"If I am sharing data with users, I am going to make sure the data is more correct. I want it to be the best it can be."

**John Gregorovic**  
GIS Department  
City of Tulsa

For more information, visit  
[esri.com/communitymaps](https://esri.com/communitymaps).



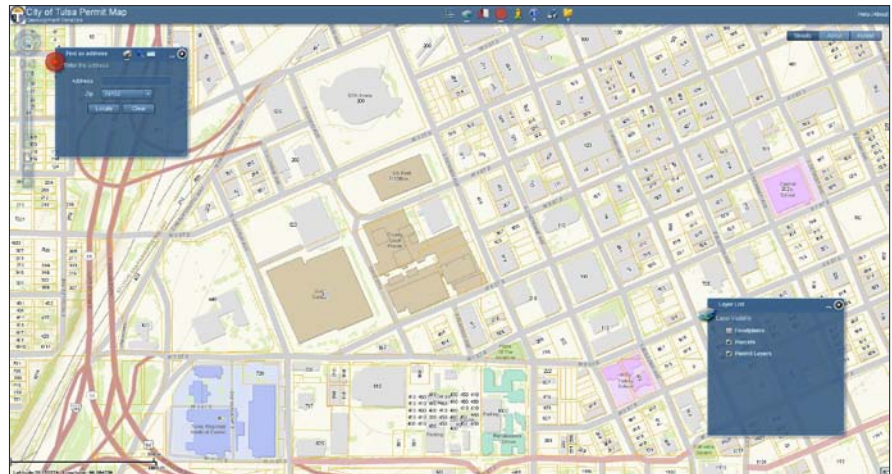
Gregorovic's utilization of the basemap has provided dynamic information to many of the city's other divisions. The city's Police, Fire, Public Works, Finance, and IT departments all have prospered from the use of the basemap. In addition, Tulsa's 400,000 residents now have access to several interactive maps that allow them to visualize and understand their community in a new way.

This is exactly what has propelled the World Topographic Map quickly into becoming the most comprehensive, authoritative, referenced basemap in the world. Contributors like the City of Tulsa retain ownership of their data and can edit it at their discretion, controlling what appears on the World Topographic Map.

## Using the World Topographic Map in New Ways

Since joining the Community Maps Program in 2010, the City of Tulsa has produced a variety of web maps. Currently, 12 applications based on ArcGIS® Viewer for Flex utilize the World Topographic Map as a reference. The Tulsa Police website features the Overall Crime Map, Meth Lab Map, Sex Offender Map, and Traffic Collision Map.

Gregorovic and his team have also created applications for various other departments within their local government. An internal Fire Incident Map allows fire fighters to check hydrants, incidents, and apartments in their immediate area and find the closest station that would be called first in response to an incident. Particularly interesting is the discovery of how a City Permit Map—created for one department—found its way into the hands of another department. It wasn't long after Gregorovic created the map for the Development Services department before another division was taking advantage of it. "We created the permit map for Development Services and found that our Finance department was using it to see what properties were within the city boundaries."



Tulsa, Oklahoma, City Permit Map

## The Road Leading to the Future

Tulsa is poised to continue revealing and exploring the community, map by map. When asked how the city intends to use ArcGIS™ Online basemaps in the future, Gregorovic replied, "We would like to keep expanding our datasets and use the basemap for more online mapping projects." Each map has produced benefits for the City of Tulsa by increasing the transparency between departments, allowing them to operate more efficiently, providing citizens with access to important information, and creating relationships based on trust and mutual understanding that underpin the healthy growth and development of the community.

For more information, visit  
[esri.com/communitymaps](http://esri.com/communitymaps).

